

CARAXY

GROWN DIAMOND IDENTIFICATION REPORT

IGI LABORATORY GROWN DIAMOND IDENTIFICATION REPORT

02/21/2022

IGI Report Number LG516277105

Shape and Cutting Style HEART BRILLIANT

Measurements 5.82 x 6.81 x 4.30 mm

GRADING RESULTS

Carat Weight 1.00 CARAT

Color Grade E

Clarity Grade VS 1

ADDITIONAL GRADING INFORMATION

Polish EXCELLENT

Symmetry EXCELLENT

Fluorescence NONE

Inscription LABGROWN IGI LG516277105

Comments :As Grown - No indication of post-growth treatment.
This Laboratory Grown Diamond was created by High Pressure High Temperature (HPHT) growth process.
Type II

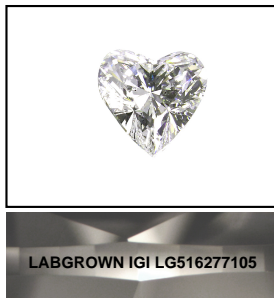
ELECTRONIC COPY



Certified By

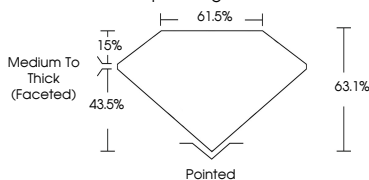
IGI

LG516277105



LASERSCRIBE SM

Sample Images Used



IGI LABORATORY GROWN DIAMOND ID REPORT

IGI Report Number
LG516277105

Carat Weight 1.00 CARAT

Color Grade E

Clarity Grade VS 1

Polish EXCELLENT

Symmetry EXCELLENT

Fluo NONE

Inscriptions(s) LABGROWN IGI
LG516277105

Comments : As Grown - No indication of post-growth treatment.
This Laboratory Grown Diamond was created by High Pressure High Temperature (HPHT) growth process.
Type II

Security Features included in this document are hologram watermarked paper and additional features not listed, that, as a composite, exceed industry security standards

For terms & conditions, please visit www.igi.org