



**INTERNATIONAL
GEMOLOGICAL
INSTITUTE**

ELECTRONIC COPY

**LABORATORY GROWN
DIAMOND REPORT**

LG557239447

**IGI LABORATORY GROWN
DIAMOND ID REPORT**

November 29, 2022

IGI Report Number **LG557239447**

SQUARE CUSHION BRILLIANT

5.93 X 5.65 X 3.71 MM

| | |
|----------------|-----------------------|
| Carat Weight | 0.95 CARAT |
| Color Grade | D |
| Clarity Grade | VS 1 |
| Polish | EXCELLENT |
| Symmetry | EXCELLENT |
| Fluorescence | NONE |
| Inscription(s) | LABGROWN LG557239447 |

Comments: As Grown - No indication of post-growth treatment.
This Laboratory Grown Diamond was created by High Pressure High Temperature (HPHT) growth process.
Type II

LABORATORY GROWN DIAMOND REPORT

IGI LABORATORY GROWN DIAMOND IDENTIFICATION REPORT

November 29, 2022

IGI Report Number

LG557239447

Description

LABORATORY GROWN DIAMOND

Shape and Cutting Style

SQUARE CUSHION BRILLIANT

Measurements

5.93 X 5.65 X 3.71 MM

GRADING RESULTS

Carat Weight

0.95 CARAT

Color Grade

D

Clarity Grade

VS 1

ADDITIONAL GRADING INFORMATION

Polish

EXCELLENT

Symmetry

EXCELLENT

Fluorescence

NONE

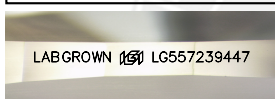
Inscription(s)

LABGROWN LG557239447

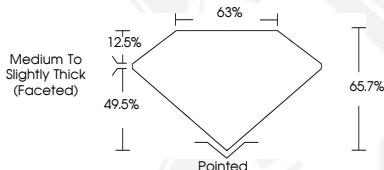
Comments: As Grown - No indication of post-growth treatment.

This Laboratory Grown Diamond was created by High Pressure High Temperature (HPHT) growth process.

Type II



LASERSCRIBESM
Sample Images Used



THIS DOCUMENT WAS PRODUCED WITH THE FOLLOWING SECURITY MEASURES: SPECIAL DOCUMENT PAPER, INK SCREENS, WATERMARK, BACKGROUND DESIGN, HOLOGRAM AND OTHER SECURITY FEATURES NOT LISTED AND DO EXCEED DOCUMENT SECURITY INDUSTRY GUIDELINES.

For terms & conditions and to verify this report, please visit www.igi.org

**IGI LABORATORY GROWN
DIAMOND ID REPORT**

November 29, 2022

IGI Report Number **LG557239447**

SQUARE CUSHION BRILLIANT

5.93 X 5.65 X 3.71 MM

| | |
|----------------|-----------------------|
| Carat Weight | 0.95 CARAT |
| Color Grade | D |
| Clarity Grade | VS 1 |
| Polish | EXCELLENT |
| Symmetry | EXCELLENT |
| Fluorescence | NONE |
| Inscription(s) | LABGROWN LG557239447 |

Comments: As Grown - No indication of post-growth treatment.
This Laboratory Grown Diamond was created by High Pressure High Temperature (HPHT) growth process.
Type II