



**INTERNATIONAL
GEMOLOGICAL
INSTITUTE**

ELECTRONIC COPY

**LABORATORY GROWN
DIAMOND REPORT**

LG583303173

**IGI LABORATORY GROWN
DIAMOND ID REPORT**

June 7, 2023
IGI Report Number **LG583303173**
EMERALD CUT
4.95 X 3.66 X 2.56 MM
Carat Weight 0.44 CARAT
Color Grade D
Clarity Grade VS 1
Polish VERY GOOD
Symmetry VERY GOOD
Fluorescence NONE
Inscription(s) LG583303173

Comments: As Grown - No indication of post-growth treatment. This Laboratory Grown Diamond was created by High Pressure High Temperature (HPHT) growth process. Type II

LABORATORY GROWN DIAMOND REPORT

IGI LABORATORY GROWN DIAMOND IDENTIFICATION REPORT

June 7, 2023
IGI Report Number **LG583303173**
Description **LABORATORY GROWN DIAMOND**
Shape and Cutting Style **EMERALD CUT**
Measurements **4.95 X 3.66 X 2.56 MM**

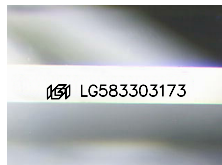
GRADING RESULTS

Carat Weight **0.44 CARAT**
Color Grade **D**
Clarity Grade **VS 1**

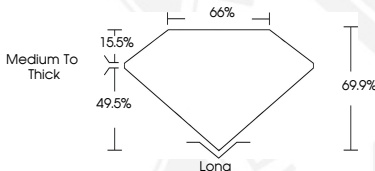
ADDITIONAL GRADING INFORMATION

Polish **VERY GOOD**
Symmetry **VERY GOOD**
Fluorescence **NONE**
Inscription(s) **LG583303173**

Comments: As Grown - No indication of post-growth treatment. This Laboratory Grown Diamond was created by High Pressure High Temperature (HPHT) growth process. Type II



Sample Image Used



**IGI LABORATORY GROWN
DIAMOND ID REPORT**

June 7, 2023
IGI Report Number **LG583303173**
EMERALD CUT
4.95 X 3.66 X 2.56 MM
Carat Weight 0.44 CARAT
Color Grade D
Clarity Grade VS 1
Polish VERY GOOD
Symmetry VERY GOOD
Fluorescence NONE
Inscription(s) **LG583303173**

Comments: As Grown - No indication of post-growth treatment. This Laboratory Grown Diamond was created by High Pressure High Temperature (HPHT) growth process. Type II

THIS DOCUMENT WAS PRODUCED WITH THE FOLLOWING SECURITY MEASURES: SPECIAL DOCUMENT PAPER, INK SCREENS, WATERMARK, BACKGROUND DESIGN, HOLOGRAM AND OTHER SECURITY FEATURES NOT LISTED AND DO EXCEED DOCUMENT SECURITY INDUSTRY GUIDELINES.

For terms & conditions and to verify this report, please visit www.igi.org