



**INTERNATIONAL  
GEMOLOGICAL  
INSTITUTE**

**ELECTRONIC COPY**

**LABORATORY GROWN  
DIAMOND REPORT**

**LG625427965**

**IGI LABORATORY GROWN  
DIAMOND ID REPORT**

April 10, 2024

IGI Report Number **LG625427965**

**CUT CORNERED RECTANGULAR  
MODIFIED BRILLIANT**

**5.42 X 3.77 X 2.73 MM**

Carat Weight 0.47 CARAT  
Color Grade D  
Clarity Grade VS 1  
Polish VERY GOOD  
Symmetry VERY GOOD  
Fluorescence NONE  
Inscription(s) LG625427965

Comments: As Grown - No indication of post-growth treatment. This Laboratory Grown Diamond was created by High Pressure High Temperature (HPHT) growth process. Type II

**LABORATORY GROWN DIAMOND REPORT**

**IGI LABORATORY GROWN DIAMOND IDENTIFICATION REPORT**

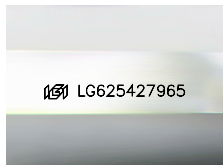
April 10, 2024

IGI Report Number LG625427965

Description LABORATORY GROWN DIAMOND

Shape and Cutting Style CUT CORNERED RECTANGULAR MODIFIED BRILLIANT

Measurements 5.42 X 3.77 X 2.73 MM



Sample Image Used

**GRADING RESULTS**

Carat Weight 0.47 CARAT

Color Grade D

Clarity Grade VS 1

**ADDITIONAL GRADING INFORMATION**

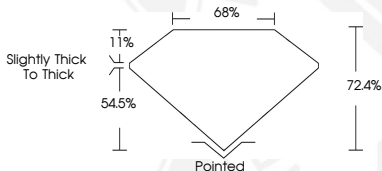
Polish VERY GOOD

Symmetry VERY GOOD

Fluorescence NONE

Inscription(s) LG625427965

Comments: As Grown - No indication of post-growth treatment. This Laboratory Grown Diamond was created by High Pressure High Temperature (HPHT) growth process. Type II



**IGI LABORATORY GROWN  
DIAMOND ID REPORT**

April 10, 2024

IGI Report Number **LG625427965**

**CUT CORNERED RECTANGULAR  
MODIFIED BRILLIANT**

**5.42 X 3.77 X 2.73 MM**

Carat Weight 0.47 CARAT  
Color Grade D  
Clarity Grade VS 1  
Polish VERY GOOD  
Symmetry VERY GOOD  
Fluorescence NONE  
Inscription(s) LG625427965

Comments: As Grown - No indication of post-growth treatment. This Laboratory Grown Diamond was created by High Pressure High Temperature (HPHT) growth process. Type II

THIS DOCUMENT WAS PRODUCED WITH THE FOLLOWING SECURITY MEASURES: SPECIAL DOCUMENT PAPER, INK SCREENS, WATERMARK, BACKGROUND DESIGN, HOLOGRAM AND OTHER SECURITY FEATURES NOT LISTED AND DO EXCEED DOCUMENT SECURITY INDUSTRY GUIDELINES.

For terms & conditions and to verify this report, please visit [www.igi.org](http://www.igi.org)