



ELECTRONIC COPY

LG643434941
Report verification at igi.org



July 18, 2024
IGI Report Number: LG643434941
Description: LABORATORY GROWN DIAMOND
Shape and Cutting Style: CUSHION BRILLIANT
Measurements: 6.89 X 5.48 X 3.66 MM
GRADING RESULTS
Carat Weight: 1.03 CARAT
Color Grade: E
Clarity Grade: VVS 2
Cut Grade: EXCELLENT

LABORATORY GROWN DIAMOND REPORT

July 18, 2024
IGI Report Number: LG643434941
Description: LABORATORY GROWN DIAMOND
Shape and Cutting Style: CUSHION BRILLIANT
Measurements: 6.89 X 5.48 X 3.66 MM

GRADING RESULTS

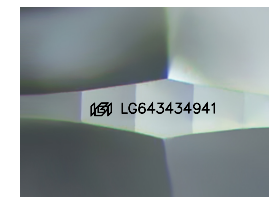
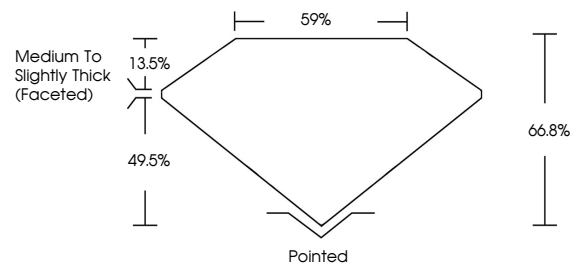
Carat Weight: 1.03 CARAT
Color Grade: E
Clarity Grade: VVS 2
Cut Grade: EXCELLENT

ADDITIONAL GRADING INFORMATION

Polish: EXCELLENT
Symmetry: EXCELLENT
Fluorescence: NONE
Inscription(s): IGI LG643434941

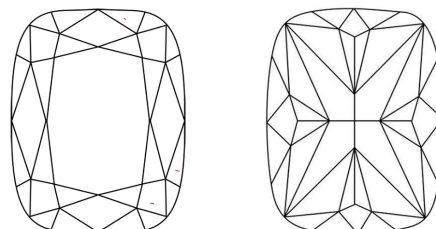
Comments: As Grown - No indication of post-growth treatment. This Laboratory Grown Diamond was created by High Pressure High Temperature (HPHT) growth process. Type II

PROPORTIONS



Sample Image Used

CLARITY CHARACTERISTICS



KEY TO SYMBOLS

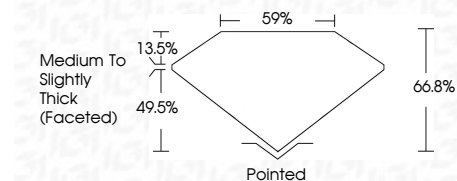
Red symbols indicate internal characteristics. Green symbols indicate external characteristics.

COLOR

D E F G H I J Faint Very Light Light

CLARITY

IF VVS 1-2 VS 1-2 SI 1-2 I 1-3
Internally Flawless Very Very Slightly Included Very Slightly Included Slightly Included Included



ADDITIONAL GRADING INFORMATION

Polish: EXCELLENT
Symmetry: EXCELLENT
Fluorescence: NONE
Inscription(s): IGI LG643434941
Comments: As Grown - No indication of post-growth treatment. This Laboratory Grown Diamond was created by High Pressure High Temperature (HPHT) growth process. Type II



July 18, 2024
IGI Report No. LG643434941
CUSHION BRILLIANT
6.89 X 5.48 X 3.66 MM
1.03 CARAT
E
VVS 2
EXCELLENT
66.8%
59%
Medium To Slightly Thick (Faceted)
Pointed
EXCELLENT
EXCELLENT
NONE
IGI LG643434941
Comments: As Grown - No indication of post-growth treatment. This Laboratory Grown Diamond was created by High Pressure High Temperature (HPHT) growth process. Type II